

TECHNICAL SPECIFICATION

geelong
arts
centre

OPEN HOUSE

VENUE ADDRESS:
50 LITTLE MALOP STREET
GEELONG, VICTORIA 3220



CREATIVE VICTORIA

CONTENTS



Venue Overview	3	Playback	8
Seating	3	Microphones.....	8
Loading Dock And Parking	4	Cabling	8
Access For Scenery.....	4	Vision Facilities	9
Fire Safety	4	Projector & Screen	9
Electrical Safety	4	Lighting Facilities	9
Dimensions	5	Main Lighting Control Desk	9
Proscenium	5	DMX Reticulation	9
Stage Surface.....	5	Dimmers	9
Rigging	6	Luminaire Allocation	9
Stage Machinery	7	Lighting Cabling	9
Access Equipment.....	7	Dressing Rooms & Facilities	10
Stage Drapes	7	Dressing Rooms.....	10
Wall/Window Coverage	7	Green Rooms.....	11
Legs/Borders/Tabs/Cyclorama/Scrim	7	Wardrobe Facilities.....	11
Audio Facilities	7	Additional Equipment	12
Loudspeaker System	7	Rehearsal Rooms	12
System Processing & Control	7	Outside Broadcast Facilities	12
Mixing Console	8	Access & Parking	12
Monitors	8	Contacts	13

VENUE OVERVIEW

This Australian first contemporary and uniquely creative collaboration space lends itself to intimate audience-performer-community experiences. The Open House allows for extraordinary versatility where the traditional boundaries defining audience and performer zones are completely dismantled and the space works as one in multiple dimensions.

When not in use for performance, the Open House has the ability to open up and be used for a range of functions, community events, and other opportunities. Seating up to 250 patrons depending on the mode and arrangement, the space offers varied and versatile seating layouts to reflect the range of uses.

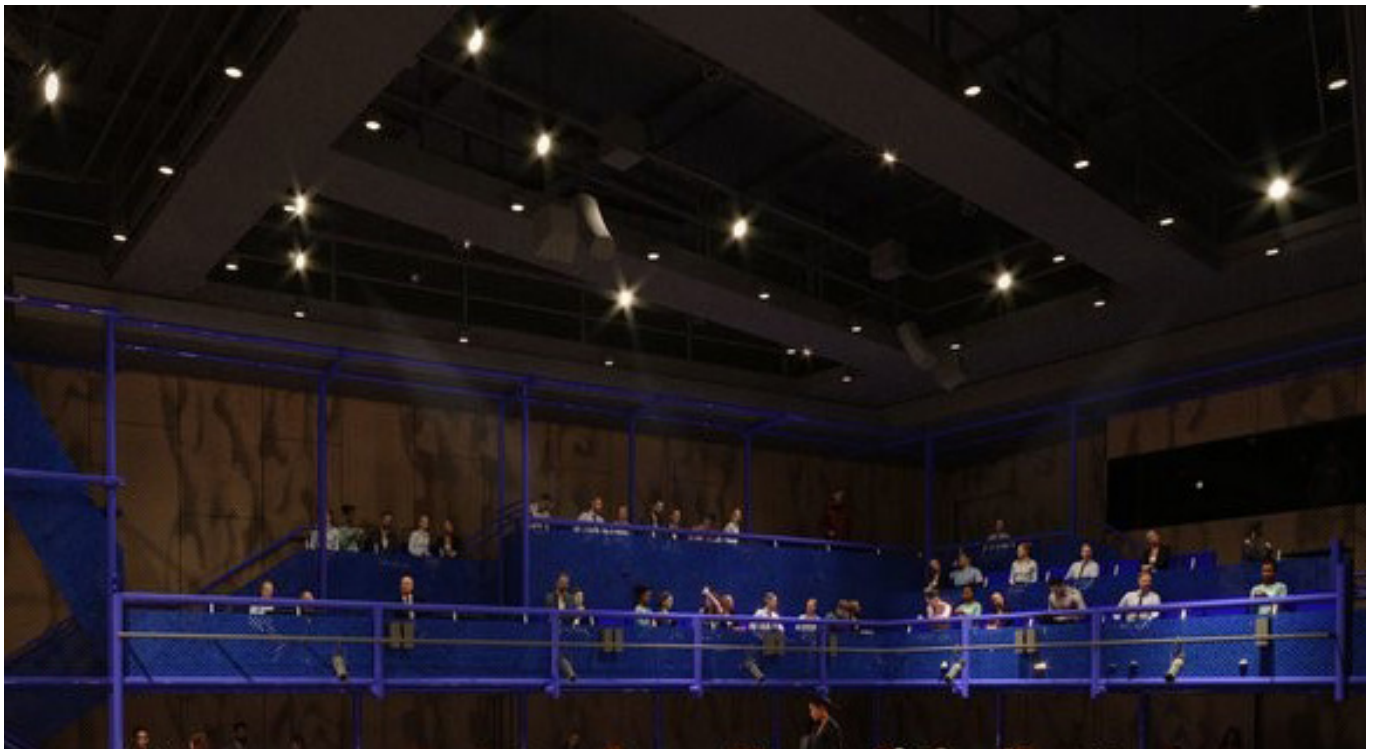
A large, motorised door connects the space to the plaza. The space is supported technically by multiple chain hoists on travelling beams and has rigging to facilitate circus style setups. The specialist stage-lighting and audio-visual systems infrastructure is compatible with the Open House.

SEATING

Capacity	Up to 250
Mezzanine	50 fixed seats, 8 loose
Ground Floor	Up to 190 loose seats

Please note the versatility of this venue means there is no fixed seating position. Seating layout requirements can be discussed when making your booking.

Wheelchairs and people with disability and/or reduced mobility can be accommodated by prior arrangement.



LOADING DOCK & PARKING

Loading Dock 3 is the main dock for Open House.

Access: Is via Aitchison Place off Fenwick Street. Vehicles will need to reverse into the loading dock and depart via Little Malop Street.

The entrance to the loading dock is fitted with a roller door. The floor of the loading bay sits 900mm above the floor of the scene dock. The dock is fitted with a platform lift that can travel up to the height of trucks parked in the loading bay and travel down to the scene dock floor level for transfer of scenery.

Loading Bay Entrance	Width	3,600mm
	Height	4,500mm
Lengths of Loading Bay Roller Door to the Bollards in front of dock		12,500mm

Platform Lift	Safetech	
Dimensions	Length	2,420mm
	Width	2,220mm
Platform Flap Depth	900mm	
Platform Flap Width	1,900mm	
Height Clearance	2,640mm	
Nominal Overall Travel Up	2,600mm	
Platform Lift Rollover Capacity	4,000kg	

ACCESS FOR SCENERY

Is directly from the loading dock through the sound lock onto the Open House through two sets of double doors. Access for larger scenery items and/or equipment to be arranged through the Open House sliding doors facing Little Malop Street.

Inner and Outer Doors (hinged manual double doors opening out)	Height	2,400mm
	Width	2,440mm

FIRE SAFETY

All scenery and staging elements must be adequately flame proofed.
No scenery/staging elements are permitted to obstruct the fire exits.

ELECTRICAL SAFETY

All electrical equipment must display a current Test Tag.

DIMENSIONS

PROSCENIUM

There is no Proscenium arch.
Venue is a 'Black Box' style studio space.

STAGE TRAP

Nil

19,025mm
ROOM DEPTH

Wall to wall

18,219mm
ROOM WIDTH

Wall to wall

13,647mm
SPRUNG FLOOR DEPTH

Performance area

13,054mm
SPRUNG FLOOR WIDTH

Performance area

ROOM HEIGHT

Floor to ceiling	9,380mm
Floor to underside of Bridges	7,140mm
Floor to underside of Balcony	2,250mm

STAGE SURFACE

Rake	Nil
Material	Semi sprung 30mm yellow tongue timber floor covered with 6.4mm Masonite painted black
Wings	Concrete

EXTERIOR SLIDING WINDOW & ACCOUSTIC DOOR

6,800mm
DOOR WIDTH

Wall to wall

4,500mm
DOOR HEIGHT

Floor to ceiling

RIGGING

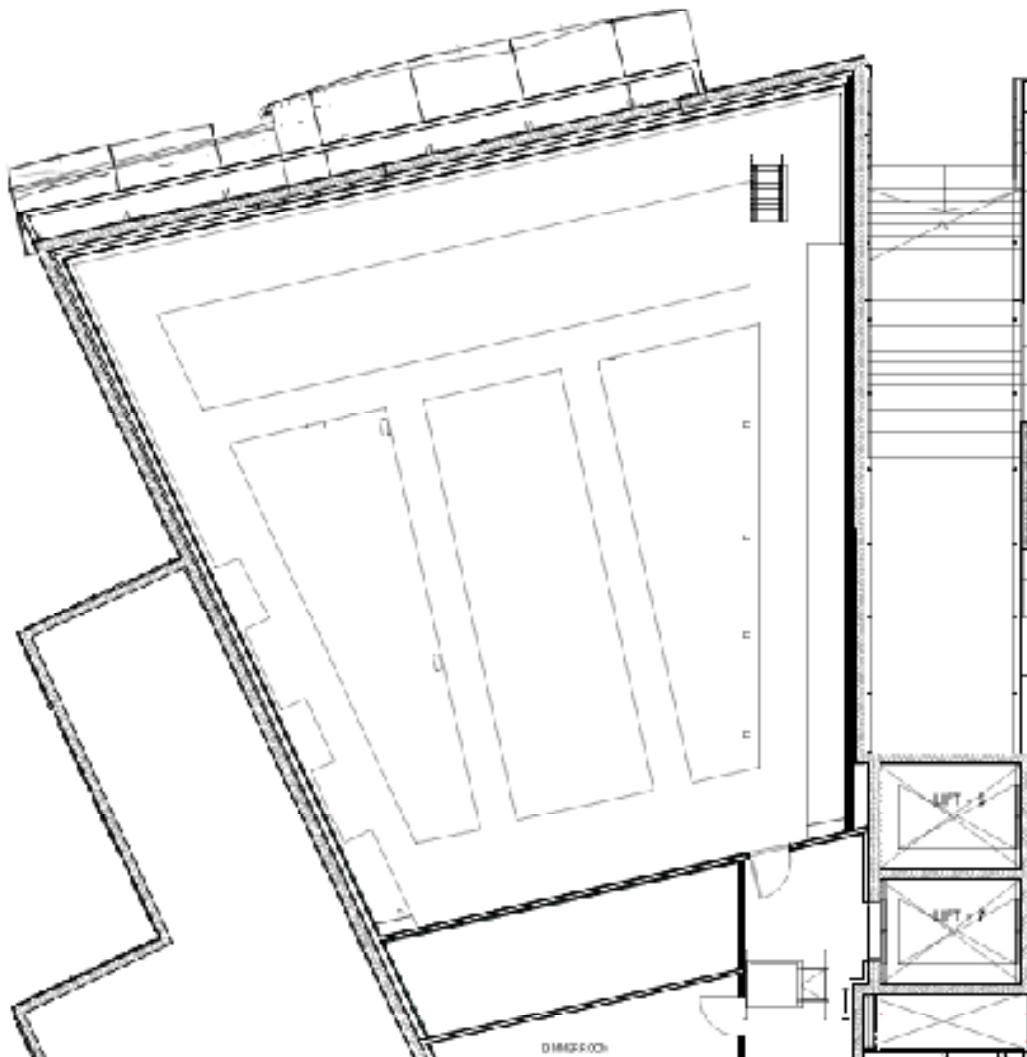
GENERAL

The Open House is comprised of five lighting bridges in a grid configuration, chain hoists on travelling beams and also has rigging to facilitate circus style setups.

Between each Bridge there are a series of rolling beam and rigging locations for chain motor and static hung equipment.

There are 1,000kg anchor points located in the floor and walls to allow for guying off equipment.

Please contact the Technical Operations Manager for more details.



STAGE MACHINERY

ACCESS EQUIPMENT

Haulotte Optimum 8AE Scissor Lift (Max Platform Height: 5770mm)
JLG 20MVL self-propelled elevating work platform (Max Platform Height: 5940mm).

STAGE DRAPES

WALL/WINDOW COVERAGE

Black acoustic retractable wool drapes are fitted in the space to provide full coverage of all walls and/or windows.

LEGS/BORDERS/TABS/CYCLORAMA/SCRIM

Can be hired in at additional cost, subject to availability.

AUDIO FACILITIES

LOUDSPEAKER SYSTEM

This facility is configured for two different Loudspeaker modes.

Mode 1: North - 5x Martin Audio CDD-Live12's capable of managing Left, Centre, Right complimented by 2x Martin Audio SXP118 active loudspeakers. This setup is ideal for Spoken word performances, conference or loud music groups.

Mode 2: West - 3x Martin Audio CDD-Live12's capable of managing Left, Centre, Right complimented by 1x Martin Audio SXP118 active loudspeaker. This setup is ideal for Spoken word performances, conference and acoustic performances.

Permanent delayed loudspeakers provide optimal coverage to the balcony and under-balcony areas.

SYSTEM PROCESSING & CONTROL

1 x Q-Sys DSP to provide loudspeaker EQ and pre-set control managed by Dante. Patch-bays Audio distribution available using the in-house distributed Cat6A + balanced audio patching infrastructure.

MIXING CONSOLE

Allen and Heath SQ5
Dante connection to the wireless system
DX168 connection to stage

MONITORS

2x dbTechnologies DVX DM12
2x RCF NX 12
Additional monitors available on request at additional cost

MICROPHONES

4x Shure SM58	2x EV N/D468
4x Shure SM57	2x Sennheiser e904
1x Sennheiser e906	2x DPA 4099 (additional available on request)
1x Shure Beta 57A	2x BSS AR-133 DI
1x Beyerdynamic M88	2x DBX db10 DI
1x Sennheiser e912	1x ARX USB DI
2x AKG C300B	2x Shure Microflex
3x Rode NT5	

WIRELESS MICROPHONES

4x Sennheiser EM 6000, SKM 6000 handheld or SK6000 bodypack MKE2, ME104 + DPA 4066 available - (available on request at additional cost) Please note we are able to supply additional wireless microphones with advance notice

CABLING

There is a number of 3pin XLR and single mode fibre cables available at various lengths.

PLAYBACK

Mac mini with QLab 4 Audio & Video Licences, at additional cost.

STAGE COMMUNICATION

Riedel Artist 1024 Communications System
PunQtum Q210 Speaker Station
2x Bolero Wireless Beltpack
2x Wired Beltpacks

VISION FACILITIES

PROJECTOR

Epson EB-Z10005UNL
12,000-Lumen Laser Projector

LENS

ELPLM06 Middle Throw Lens or
ELPLS04 Standard Lens

SCREEN

Monoblox32 Frame 16:9 13.11x8.2ft Monoblox32 FP
Flex Black PRO Surface

LIGHTING FACILITIES

MAIN LIGHTING CONTROL DESK

ETC ION
1x External Touchscreen
Keyboard and Mouse

LIGHTING DATA NETWORK

6x Portable Pathport C-Series nodes with hanging brackets

DIMMERS

6 x GEN VI Dimmer Distro each with 12x 10Amp Circuits
More Dimmers are available (*subject to availability*)

LUMINAIRE ALLOCATION

15x Source Four LED Series 2 Lustr
Lens stock TBC

24x ETC ColorSource PAR Deep Blue

HAZE:

1x Unique 2.0 (available at an additional cost)

LIGHTING CABLING:

A number of 5pin DMX, Cat6 and single mode fibre cables available at various lengths.

DRESSING ROOMS & FACILITIES

The Dressing Rooms are located on three levels. Dressing Rooms are shared across all the venues in the Centre.

Dressing rooms will be allocated in consultation with your events account officer.

DRESSING ROOM – NUMBERS AND FACILITIES

ROOM NO.	LEVEL	SIZE	SINKS	TOILET ENSUITE	SHOWERS	MAKE-UP TABLES	CAPACITY
1	G	38m ²	3	0	0	10	25
2	G	38m ²	3	0	0	10	25
3	G	14m ²	1	1	1	3	5
4	G	14m ²	1	1	1	3	6
5	G	14m ²	1	0	0	5	15
6	G	17m ²	1	1	1	5	15
7 (quick change)	G	8m ²	0	0	0	0	2
8 (quick change)	1	7m ²	0	0	0	0	2
9	1	10m ²	1	1	1	4	4
10	1	19m ²	1	1	1	4	8
11	1	20m ²	1	1	1	4	10
12	1	16m ²	1	1	1	2	6
13	1	14m ²	1	1	1	2	6
14	1	14m ²	1	1	1	2	5
15	2	40m ²	3	1	1	12	25
16	2	37m ²	3	1	1	12	25
17	2	15m ²	1	1	1	4	8
18	2	22m ²	1	1	1	6	15
19	2	22m ²	1	1	1	6	15
20	2	19m ²	1	1	1	2	8
21	2	13m ²	1	1	1	2	6
22	2	13m ²	1	1	1	2	6

GREEN ROOMS – NUMBERS AND FACILITIES

A Green Room will be allocated per hirer.

ROOM NO.	LEVEL	SQ M	KITCHENETTE
Green Room 1	G	90m ²	1
Green Room 2	2	92m ²	1

PRODUCTION OFFICES

Subject to availability

ROOM NO.	LEVEL	SQ M	DESKS
Production Office	B	17m ²	2
Stage Management Office	1	14m ²	2

WARDROBE FACILITIES.

There is a well-equipped Laundry located in the basement with adjoining Drying Room. Attached is our Wardrobe / Costume Workshop, which has additional costume racks available.

Please be aware that irons and steamers cannot be used in dressing rooms, as they will set off the fire alarms. If you require these items, please let us know and we will give you access to our Laundry and Wardrobe facilities.

Laundry	3x Commercial Washer	
	3x Commercial Dryers	
	Electric Steam Irons	
	Ironing Boards	
	Steamer Unit	
	2x Work Benches	
	Fume Extractor (for wig maintenance)	
Drying Room	Length	5,180mm
	Width	2,500mm
Costume Workshop/Store	1x Work Benches	
	Portable Wardrobe Racks	

ADDITIONAL EQUIPMENT

Additional Lighting, Audio, Vision and Staging equipment not included in the standard schedule may be available, please contact our production coordinators for further information.

OUTSIDE BROADCAST FACILITIES

Theatre Location: Control Room

Facilities: TBC

External Location: Loading Dock 3

Facilities: Single mode Fibre from Loading Dock 2 to Stage
Cable pass from Loading Dock 2 into scene dock

REHEARSAL ROOMS

The Centre has 4 rehearsal studios available for hire, with access to amenities and kitchenettes. All studios have

sprung floors suitable for dance, and are equipped with mirrors, black masking and grids for lighting.

ROOM	LEVEL	SQ M	DESCRIPTION	CAPACITY
Studio 1	L3 Ryrie Street	109m ²	Multipurpose Studio Space	30
Studio 2	L3 Ryrie Street	138m ²	Multipurpose Studio Space	30
Studio 3	L4 Ryrie Street	117m ²	Multipurpose Studio Space	30
Studio 4	L4 Ryrie Street	279m ²	Rehearsal and Performance Studio Space	124

ACCESS & PARKING

STAGE DOOR

Hirers and staff must enter and exit the Centre through the stage door located off Little Malop Street.

PARKING

Geelong Arts Centre does not have any on-site parking. Street Parking is available around the Centre.

Off Street Parking is available around Geelong Arts Centre, time limits apply.

The Civic Centre Car Park is located opposite City Hall in Gheringhap Street.

Paid parking is available 24/7. Height restrictions of 2.1m apply.

CONTACTS

Please refer all Technical queries to production@geelongartscentre.org.au

Ben Van Dillen

Technical Operations Manager

P: (03) 5225 1267

M: 0412 296 441

Alex Malibu

Production Coordinator

P: (03) 5225 1219

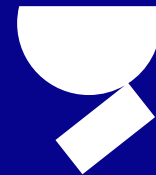
malibu@geelongartscentre.org.au

Ross Aitkenhead

Production Coordinator

P: (03) 5225 1236

ross@geelongartscentre.org



geelong
arts
centre



Date: 07/12/2023

Version: 2024v1

Updated By: Ben Van Dillen, Alex Malibu, Ross Aitkenhead